

The Aucma CFD-50 Mains and CFD-50 SDD refrigerators are designed with MetaFridge technology to protect vaccines even when power is unreliable. Proper user care and maintenance helps ensure good performance.



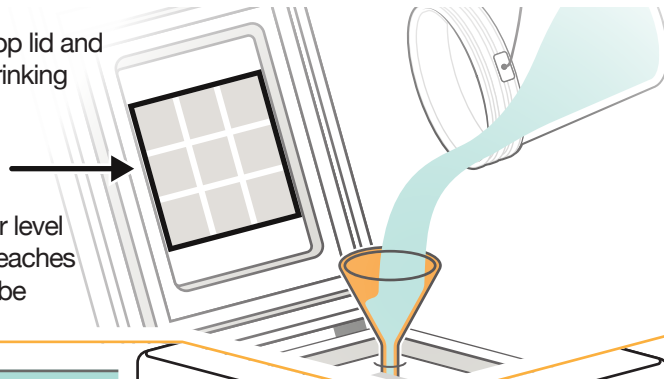
120 hrs holdover at 43 °C ambient

TECHNICIANS ONLY

Before first use open top lid and fill with 32 L of clean drinking water.

Instructions for filling

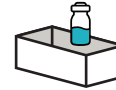
Every year check water level and add water until it reaches the bottom of the fill tube



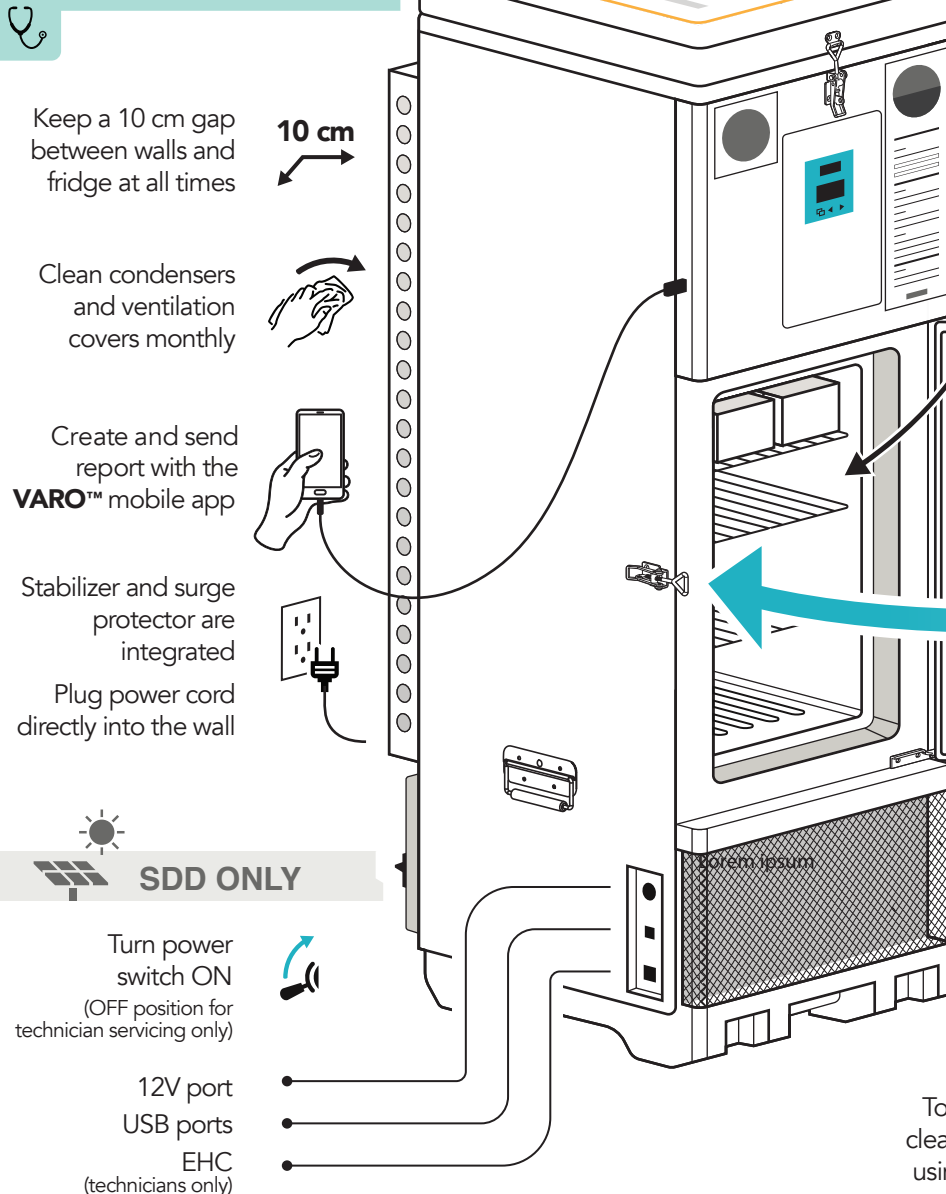
HEALTH FACILITY STAFF



For instructions for using the 30DTR display, turn over



All areas of the chamber are safe for vaccine storage. Use trays provided and keep vaccine packaging from touching the walls.



Keep a 10 cm gap between walls and fridge at all times



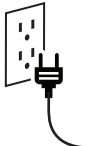
Clean condensers and ventilation covers monthly



Create and send report with the VARO™ mobile app



Stabilizer and surge protector are integrated
 Plug power cord directly into the wall



OPEN ONLY WHEN REQUIRED

Only store vaccines in the refrigerator, no food or drink



Wipe away condensation and moisture as needed. Check the two door gaskets for damage every month and wipe them clean



Keep the door closed and latched when not in use



SDD ONLY

Turn power switch ON (OFF position for technician servicing only)



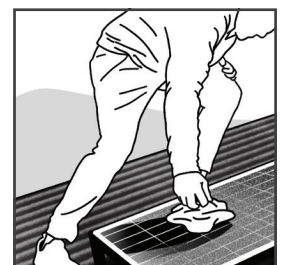
12V port
 USB ports
 EHC (technicians only)



SDD ONLY

Dust buildup decreases solar power

To prevent loss of power, clean solar panels monthly using water and a soft rag



CURRENT PAGE

LED Indicator
Red Blink: Alarm
Green: Compressor Running

Page Name
Shows selected page

Holdover
Estimated time fridge will stay cold without power

Page Selection
Touch to toggle page views

Current Date
or date of record in history page

Power Availability
CFD-50 Mains Power in-range NO power
CFD-50 SDD Power in-range NO power

30 Day Timeline
Middle no alarm
Elevated high temp alarm
Below low temp alarm

ACTIVE ALARM

Alarms indicate a condition that could threaten vaccine safety. During an active alarm the LED will flash red, there will be an audible beeping sound, and the display will show the alarm type and duration.

ACTIVE ALARM
HIGH TEMPERATURE
DURATION: 20 hrs

Touch to Silence

HISTORY PAGE

History
Shows the temperature range for that day

Triangle
Indicates position in record

L and R arrows
Allow you to move backward or forward through daily records

DAILY OVERVIEW
HISTORY 2017-Jan-10
3.5°C 4.0°C 7.3°C
Min Avg Max

ALARM RECORD
ALARM 1/2 2017-Jan-8
Start Time: 11:18
Low 1hrs -0.7°C
Type Dur Avg

Alarm Types	Case
High Temperature	(10 hrs > 8 °C)
Low Temperature	(1 hr < -0.5 °C)
Door Open	(> 20 minutes)
Low Holdover	(< 2 days remain)
No Holdover	(0 days remain)